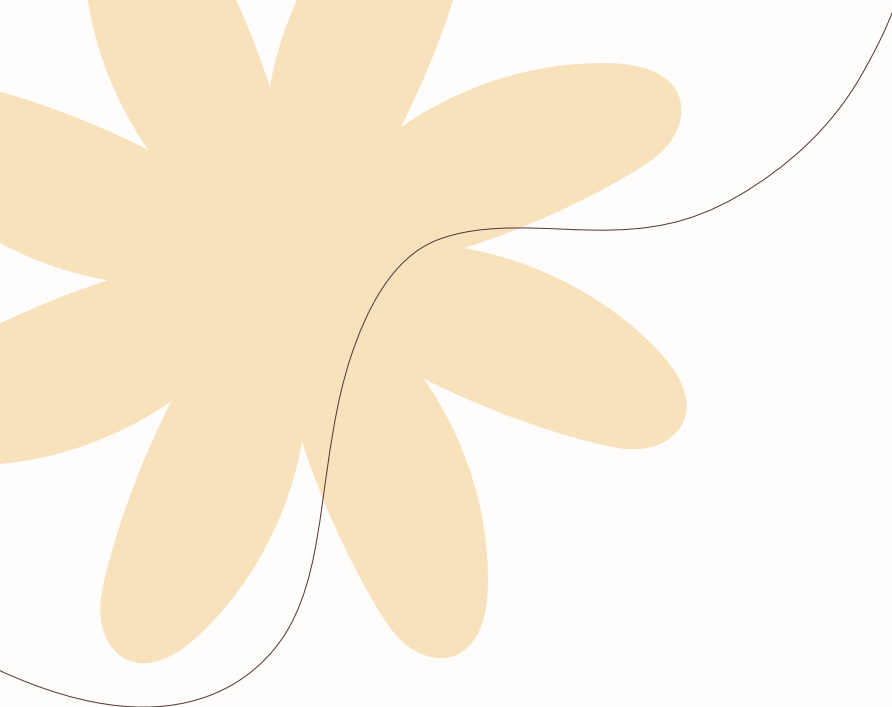


# iosis.

Ko te whakawhiti o te  
oranga whānau mo te pai

ANNUAL REPORT 2025





"My parent support person has been so amazing. **She's been so supportive and always goes the extra mile.** She helped me set up routines and parenting strategies for managing my son and gave me so much personal support and encouragement.

She was an absolute godsend, and **I was very sad to say goodbye to her** when I reached the end of my sessions."

**Cara**

## **Iosis Limited**

### **Charities Registration**

CC 11266

### **Postal Address**

PO Box 98 840, Manukau City,  
Auckland 2241

### **Contact**

09 269 0050

[enquiries@iosis.org.nz](mailto:enquiries@iosis.org.nz)

[www.iosis.org.nz](http://www.iosis.org.nz)

## CONTENTS

04 Our Vision

10 Whānau  
success stories

05 CEO report

14 Highlights

06 Chair report  
and board of  
trustees

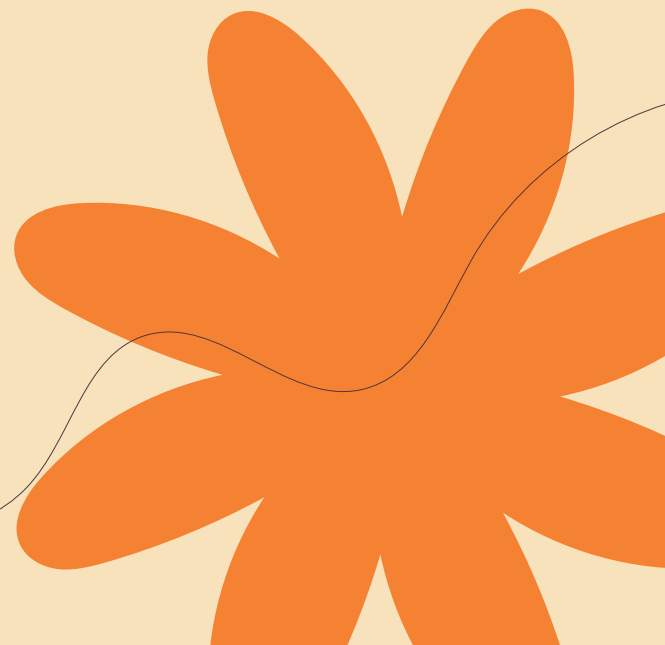
15 Financial  
report

07 What  
we do

18 Nga mihi

08 Māori  
framework  
report

09 2025  
outcomes



## Our vision

**'Future generations of New Zealanders raising strong healthy families.'**

Many parents aspire to a better life for themselves and their family but are limited by their own upbringing and personal circumstances.

They find themselves with a family for which they lack the resources, skills and support to look after their children, leading to a cycle of stress, frustration and

violence that's passed on to the next generation, and the next. At Iosis, our goal is to break that cycle.

We're committed to helping whānau overcome personal and parenting challenges and supporting whānau to free themselves from long-term trauma that negatively affects the next generation.

## Our values



### Whanaungatanga **Connected**

We seek to form the kind of relationships that connect us to whānau as whānau.



### Te Māia **Courage**

We are courageous with whānau, partners and ourselves.



### Manaaki **Respect**

We seek equal and fair treatment for all, valuing the uniqueness of every person.



### Te Whakahaere **Stewardship**

We are committed to investing our resources and time efficiently and effectively.

## Faith statement

As a faith-based organisation we follow Jesus Christ. We value honesty and respect that enable true connectedness that comes from journeying together as a family. We practise this way so that life and hope may be known by all and lived in all its fullness.

**I runga i te kaupapa whakapono e whai ana tatou i a Ihu Karaiti. Ka whakanui tatou i te pono me te whakaute e taea ai te honohono pono e puta mai ana i te haere tah hei hapu. E mahi ana mātou i tenei tikanga kia mohio ai te katoa ki te ora me te tumanako, kia noho ai i roto i te katoa.**





# Kia ora and greetings to all,

**Proverbs 3:5-6 Trust in the Lord with all your heart and lean not on your own understanding. In all your ways acknowledge him and he will direct your path**

The 2024/25 year has been a year of highs and lows as we celebrate some remarkable achievements, while continuing to adapt our services in the face of a tough financial climate. Uncertainty of funding continues to be our most significant issue, impacting on our work to transform the lives of whānau in need.

In August 2024, we were informed that Oranga Tamariki would no longer fund several of our key services including the Iosis Whānau Centre, our MenD and Parenting Group Programmes – and funding has also been reduced for our Community Social Work team.

The recent closure of the Iosis Whānau Centre marked the end of over four decades of residential service to mothers and children, dating back to 1981. Sadly, 44 years later, we held a closing ceremony at the site in Onehunga and handed the keys back to Kainga Ora.

The termination of all these services has been a great loss, resulting in 14 frontline and administrative staff leaving Iosis. Their departure was felt deeply by our Iosis whānau, and we are grateful for the many years that they have invested into this important mahi.

At the same time as social services across the country have been reduced, the demand for our life-changing mahi continues to grow. Family violence incidents are increasing; those needing financial assistance support due to job losses and the high cost of living is leading to long waitlists; and increasing numbers of tamariki are experiencing anxiety, trauma and behavioural issues, placing additional pressure within schools and our SWiS\* and MASSiSS services.

On a more positive note, I would like to acknowledge and thank our Baptist supporters, particularly Eastview Baptist Church, for running the Winter Warmers campaign again this year. As well as warm pyjamas and clothing for tamariki, they generously provided crockpots and recipe books for vulnerable families in our community.

Another highlight was the launch of our SWiS book, *“Who is a SWiS and what do they do?”*. Written by the Iosis SWiS team, this helpful resource is being used in schools to explain to tamariki and their whānau how our social workers can support them. We are immensely grateful to the Frimley Foundation for their generous grant, which enabled us to publish this important book.

I am blessed with an amazing team of passionate and committed people who turn up every day and make a difference in the lives of whānau. This work is not easy, but through our values of Connected, Respect, Courage and Stewardship, along with a steadfast faith, we have stayed the course that God has laid out before us. Thank you team for all that you do!

As we begin this new year, funding from Oranga Tamariki is only confirmed until 31 December 2025. We remain hopeful that support will continue in the years ahead, bringing the stability and consistency our community urgently needs.

In closing, I am reminded of the whakataukī - *“ehara taku toa i te toa takitahi, he toa takitini.”* My strength is not as an individual, but as a collective. Backed by the faith and generosity of our supporters, partners and Baptist community, we hope to continue to stand strong and transform family life.

Blessings,



**Tunumafono Tracey-Leigh Peters**  
Iosis CEO

\* SWiS (Social Workers in School)

\*\* MASSiSS (Multi Agency Support Services in Secondary Schools)

# Tēnā koutou katoa,

2024/25 has once again been a challenging year, throughout which the Iosis team has continued to step up and support vulnerable families to change for the better.

The continued economic downturn has put further pressure on not-for-profit organisations such as Iosis. Central Government funding cuts and the subsequent closure of many of our services has directly impacted the very people we are here to serve: namely, vulnerable South Auckland families who face added pressures in these uncertain times.

These challenging times have further strengthened our resolve to find new and innovative ways to serve our community. To that end, the year has seen several positive achievements which are outlined in this report. I am very grateful for the unwavering support of the leadership team and my fellow Board Directors, who have all gone above and beyond in their dedication to the Iosis mission.

As we look ahead, we can be inspired by this *whakataukī* - "*I oreā te tuatara ka patu ki waho.*" A problem is solved by continuing to find solutions. Together, supported by the generosity and faith of all those who stand beside us, Iosis will continue to find solutions and to enhance the lives of whānau in our community.



**Clayton Kimpton**  
Chair, Iosis Board

**"I oreā te tuatara ka patu ki waho."**  
A problem is solved by continuing to find solutions.

## Board of Trustees



**Clayton Kimpton**  
Chair  
LLB



**Ian McInnes**  
MBA, MSc



**Naomi Cowan**  
MNZM



**Wayne Schache**

# Our mahi

Guided by our kaupapa Māori framework, we work with whānau to break the cycle of family violence and addiction, create systems of support, and help families learn to be safe and nurturing for their tamariki.

When whānau come to Iosis for help, we walk alongside them, step by step, as they journey towards transforming their family life, for good.

## Who we help

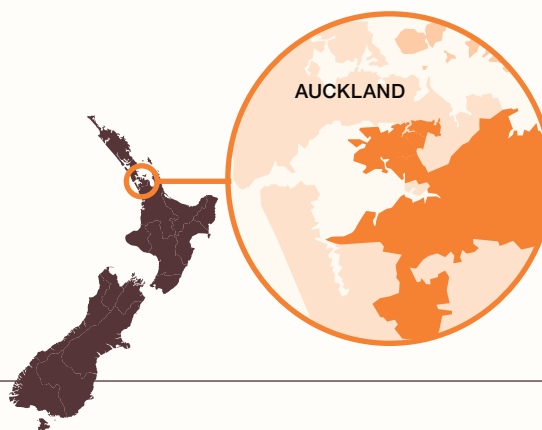
We support whānau of any culture to lessen family violence and stress, improve their situation and strengthen their families.

## How we help

Our unique, wraparound approach is designed to address the complex challenges of the families we help. In collaboration with other agencies, iwi and community groups, we combine personal coaching, practical support and experiential learning programmes, to enable whānau to make positive changes, for good.

## Where we help

Iosis supports whānau in the wider South Auckland area, including: **Manurewa, Clendon, Homai, Papakura, Takaanini, Manukau and Pukekohe.**



# Our services

## Counselling

Through counselling, we guide couples, families and children towards positive transformation for the good of their whānau.

## Foster care

Iosis supports foster carers to care for tamariki and rangatahi in need of loving, caring homes, including short-term, long-term and respite care.

## Social Work

Our caring and committed social workers support families to understand and overcome the challenges that are affecting their family life.

## Social Workers in Schools (SWiS/MASSiSS)

Our dedicated in-school social workers support and nurture our young people across 15 South Auckland primary and secondary schools.

## Parent support

An individualised, home-based parent coaching and support programme designed to help families overcome the challenges of parenting.

## Financial mentoring

A financial mentor assists families to navigate money problems, reduce financial stress and improve their financial literacy and wellbeing.

## Family violence services

Iosis provides a range of services to support, educate and empower whānau to make better decisions to ensure that their children and whānau are safe.

# A holistic framework for whānau wellbeing

Our kaupapa Māori framework is a holistic model founded on our 3W's approach of 'believing, becoming and belonging' and guided by Ngā Pouwaru ō Iosis, eight pou (pillars) designed to support our work with whānau Maori.

This philosophical and practical framework helps clients to better understand whānau relationships, while creating changes to enhance wellbeing and healing. With around 50% of our clients identifying as Māori, this framework ensures a culturally relevant and consistent approach across all our services.



## Whakapono

We hold the hope of meaningful and lasting change for whānau until they are ready to embrace it on their own. We do this through:

- 1 Tika, Pono and Aroha**  
Building a relationship with whānau, having complete faith that the work being undertaken serves the best interest for the whānau.
- 2 Manaakitanga**  
Showing respect and kindness, recognising the value of the person in order to uplift their feeling of self-worth.

## Whanaketanga

We support and enable whānau to rebuild broken relationships, reconnect with cultural identity, and find healthy and positive support networks. We do this through:

- 3 Whakapapa**  
Making connections through genealogy, common interests and kōrero: the process of beginning to build trust.
- 4 Whanaungatanga**  
Building and strengthening relationships; finding opportunities for engagement and interaction.
- 5 Ūkaipo**  
Creating a safe, caring, trusting and encouraging space for whānau to express themselves openly and honestly.
- 6 Kotahitanga**  
Knowing that the Iosis worker and the whānau are not alone; that our support forms a wrap-around service aimed at meeting the needs of the whānau.

## Whakapapa

We seek to create 'wairua' (spiritual) moments, through which whānau can connect their learning with who they are and who they seek to become. We do this through:

- 7 Rangatiratanga**  
Our end goal is that whānau can stand on their own, with pride uplifted and knowing that their needs have been met.
- 8 Wairuatanga**  
Ensuring the total wellbeing of each person by nurturing their tinana (body), whānau (family), hinengaro (mind and emotions), and wairua (spirit)



# Enabling better lives for whānau, every day

We're proud of these outcomes. It means more parents are learning to overcome challenges, more tamariki are safer and supported, and more whānau are on a journey towards a better life, together.

## Counselling

88

Adults & children attended a counselling session

## Social Workers in Schools (SWiS)

26

Programmes delivered in schools

## Adults Supporting Safety programme

29

Completed assessment

## Adults Supporting Safety completed programme

9

## Children's Supporting Safety programme

9

Completed assessment

## Social Work

106

Families received support from a community social worker

## Foster care

8

Children were in short to long term care

## Respite care

10

Children were in respite care

## Parenting Group Programmes

88

Attended the programmes

## Parenting Group Programmes graduates

42

## MenD programme

45

Men attended the programme

## MenD completed programme

10

## Iosis Whānau Centre

2

Mums entered the programme with their tamariki

## Iosis Whānau Centre graduates

6

Mums who completed programme

## Financial Mentoring clients

141

People attended a session with a financial mentor

## Financial Mentoring sessions

267

## Non-violence programme

35

Completed assessment

## Non-violence completed programme

26

## Intensive social work

4

Families received support from our social worker

## Multi Agency Social Services in Secondary Schools (MASSiSS)

22

Programmes delivered in schools

## Parent Support

42

Families received support

## **“Don’t be afraid to reach out for help ... it can make your family stronger.”**

**When Cara’s\* husband developed a meth addiction and became violent, it was a ‘deal breaker’. Now parenting on her own, she turned to Iosis for parenting support for herself and her four children.**

As a mum to four children, Cara has always been determined to give her children a different childhood to the one she experienced. “My number one rule when I became a parent was that I never wanted to expose my kids to violence,” she says.

She says her relationship with her partner was always a bit up and down. “He had a neglected childhood, but he’d always tried to be a good father,” she says. When she discovered that he was addicted to meth, she asked him to leave. “He became violent, and I had always told him that was a deal breaker.”

After her partner left, Cara found it hard to parent on her own. “My eldest boy had always been a good student, but he started to play up and get into the wrong crowd. I didn’t know what to do. As well as getting support to parent my son, I knew I needed to fix myself too. With all that was going on, my childhood traumas were starting to bubble back up and that’s when I contacted Iosis to seek counselling,” she explains.

### **“We’re absolutely in a better place”**

Cara is thankful for the Iosis Parent Support team. “My parent support person has been so amazing.

She’s been so supportive and always goes the extra mile. She helped me set up routines and parenting strategies for managing my son and gave me so much personal support and encouragement. She was an absolute godsend, and I was very sad to say goodbye to her when I reached the end of my sessions.”

Cara says both her and her eldest son are now “absolutely in a better place”. Her son is back to being a good student, and her other children are doing well too. “Reaching out for help is scary when you’ve grown up with violence – all I’d heard as a child was ‘don’t tell or they’ll take you away’,” she says. “I had to overcome this fear for the sake of my family and hope and trust that this wouldn’t be the case.”

To other parents, she says, “Don’t be afraid to reach out for help. It doesn’t mean you’ll lose your children, and it can make your family stronger. I felt so much relief when I started getting help from Iosis and they’ve been nothing but supportive.”

*\*Name has been changed and a stock image used to protect privacy.*

**“My parent support person has been so amazing ...**  
she helped me set up routines and parenting strategies for managing my son and gave me so much personal support and encouragement.”



# "It feels so good to get my debts paid off."

When mounting debts were causing massive stress for solo mum, Mereana, she turned to our Financial Mentor for help – and began to turn her life around.

A solo mum to two girls aged ten and six years old, Mereana rents a Kāinga Ora home in Manurewa. She contacted Iosis for help when she realised her debts were getting on top of her. She was starting to feel very stressed and didn't know how she was going to manage. "I live in the area and knew of Iosis," she explains.

on how to manage my money to pay off the debts, Karen got in touch with the people I owed money to and talked to them about the different options. That made such a difference as I wasn't sure where to start."

## From debts to savings

Mereana is now able to save a little money each month. "I never thought I could afford to start to put money aside, but Karen has shown me that it's possible.

"I never thought I could afford to start to put money aside, but Karen has shown me that it's possible. **Now I put away little bits here and there and it feels good.**"

"One day when I was feeling particularly stressed, I rang them and was introduced to Karen, their Financial Mentor. Karen was amazing from the start. She has never once judged me or my situation; but has supported and helped me find a way forward."

Mereana is currently studying and looking to return to work soon. "I've always been okay at managing my money, but when you live on a tight income it doesn't take much for it to change from being okay to not okay. I had debt that I didn't know how to pay off, while still being able to support my girls."

Karen, who has worked at Iosis for nearly 15 years, helped Mereana develop a budget and work out how to pay off her existing debts. "As well as guiding me

Now I put away little bits here and there and it feels good." Having two little girls has made Mereana more aware of the importance of being financially stable and teaching her girls how to manage money. "They get a little bit of pocket money, and I talk to them about saving some and how money can grow."

Karen has also connected Mereana with other organisations who can assist her. "My girls are going to be sleeping on two new beds thanks to Karen. I could never have afforded new beds – we are so grateful. Iosis has been wonderful, and it feels so good to be getting my debts paid off and starting to move ahead – thank you!"

*\*A stock image has been used to protect privacy.*

# Iosis Whānau Centre - transforming family life for over 40 years

Sadly, in February of this year, a chapter closed in the history of Iosis as we farewelled the Iosis Whānau Centre. Formerly known as Childhaven and Merivale, the Centre has been part of the fabric of our organisation for decades, and its closure due to significant funding cuts is a huge loss for our community.

For 44 years, this incredible residential programme has transformed the lives of vulnerable young mothers, empowering and equipping them on their parenting journey. Over a six-month period, these mothers start to overcome abuse or addiction and learn invaluable parenting skills, leaving as safer, stronger mums with their tamariki in their care.

Since Iosis took over the Centre in 2006, we have had approximately 200 mothers come through our doors with over 500 children. Whilst some were not always successful in retaining their children in their care, many graduated from the programme with their children – and have gone on to lead successful, safe and happy lives.

At the closing ceremony, we were joined by many current and past staff as we marked the end of 44 years of residential service. We would like to thank all those we've worked with over the years, including representatives from Oranga Tamariki and Kainga Ora.

To the staff of the Iosis Whānau Centre, both past and present, we are very grateful for your dedication and mahi. You have made a difference to many lives, not only the mothers who attended our programme, but also the generations that come after them.

We believe the most powerful way to sum up the impact of the Iosis Whānau Centre is in the words of the mums whose lives we touched.

Their stories inspire us that there is hope, and that we can continue to transform lives through our other services in the community.

**"I'm graduating with a new perspective on life, about being a parent and about myself. I'm going to break the cycle, so that my daughter has a different life to mine." - Tyla**

## A long, strong history of supporting mums to change

**1981**

The Merivale Centre for Women and Families was officially opened. Managed by Baptist City Mission, it offered emergency accommodation for mothers and children.

**2003**

The refuge moved from Merivale Road in Epsom to Lenore Road in Mangere.

**2006**

Iosis was established and took over management of Merivale, transforming it into a residential and day programme for mothers and children.

**2015**

Asbestos was discovered at our Mangere site, and after many challenges, the service moved to the current site in Onehunga.

**2023**

The Merivale Whānau Development Centre was renamed Iosis Whānau Centre to more closely identify the residential parenting programme with Iosis's other mahi.

**2025**

Sadly, in February, we closed the doors of this transformative service.

# "I've benefited so much from being here."

The Iosis Whānau Centre not only helped Lily-Rose get clean, it enabled her to keep her child and look forward to a better, happier life for her and her daughter.

Sadly, Lily-Rose was the last mother to graduate from the Iosis Whānau Centre before it closed its doors. She grew up on Waiheke Island and became pregnant at just 17 years of age while she was still in Year 11 at school.

At school, she smoked weed regularly and before long, progressed to taking meth at the weekends. Her boyfriend, who was much older, was also doing weed and meth. "I had a pretty stable family life, and I was really terrified of telling my parents I was pregnant, but they've been really supportive," she reflects.

"I was an addict and also really scared, but you soon realise that **the staff are there to help you, not judge you.**"

Lily-Rose found having a newborn baby a struggle and she began to take meth more and more often. Her partner's parents were concerned and called Oranga Tamariki, who granted them temporary custody of her baby, Raven.

Oranga Tamariki advised Lily-Rose that, unless she undertook a residential programme like the Iosis Whānau Centre, she would lose her daughter. "I was distraught, and it made me realise that I needed to make changes in my life, or I would lose Raven permanently," she says.

She was high when she entered the programme in 2024 and immediately went into detox. She has completed two addiction programmes, now attends NA (Narcotics Anonymous) and is clean. "It was so hard when I first arrived," she says. "I was an addict and also really scared, but you soon realise that the staff are there to help you, not judge you."

## "Having that support is life changing"

Once she had finished the detox, Lily-Rose undertook several of the programmes offered by the Centre. "The Women of Worth programme was really enlightening, and I feel much more confident and surer of myself than when I arrived," she reports.



"The personal learning at the Centre is great, but it's the people who make the biggest difference," says Lily-Rose. "They only want what's best for you and your child, and having that encouragement to overcome challenges is life-changing."

"It's so sad that the Iosis Whānau Centre has closed and that other mums won't have this opportunity to change for the sake of their kids," she says. "I've benefited so much from being here and know others would too. I've learnt that there is never a success story for an addict. Everyone falls over eventually, so get help before you fall for your own sake – and for your child, because they need you."

*\*A stock image has been used to protect privacy.*



# Teaching young students that it's okay to ask for help

A highlight of the year was the launch of 'Who is a SWiS and what do they do?' - a wonderful book that was written and designed by our SWiS (Social Workers in Schools) team.

This beautifully illustrated book teaches school students that SWiS are there if they need to talk about anything that's worrying them at school or at home. The launch event was held at Iosis with an excellent turnout, including representatives from Oranga Tamariki and other local social service agencies, as well as our SWiS/MASSiSS team and the schools they support.



Proud illustrators, Jolisa Silu'uga and Heidi Austin-Crawford, former Iosis SWiS Manager, read the book to great applause. "This book has been a labour of love by the whole SWiS team, and we're so thrilled to finally have it published," said Heidi. "Through simple, child-like messaging and illustrations, teachers can let children know that we're there to help, no matter what's going on in their lives."

"The launch was a very special reason to celebrate," said Tunumafono Tracey-Leigh Peters, Iosis CEO. "This book is an important milestone in our mahi in schools – reassuring children that there is always someone they can talk to. By reaching these children early, we can ensure that little problems don't become bigger problems in later life."



Since the launch, many social service agencies and government departments have purchased the books to add to their resources. If you'd like to purchase any copies for your school or library, please use the QR code below.



<https://www.iosis.org.nz/our-work/resources/#swis-book>

"By reaching these children early, **we can ensure that little problems don't become bigger problems** in later life."

- Tunumafono Tracey-Leigh Peters

# Financial report

**This year, we have generated a healthy operating surplus, surpassing the previous year's figures. We have continued to deliver services through our government contracts with Oranga Tamariki, the Ministry of Social Development, the Ministry of Justice, the Department of Corrections, and the New Zealand Police.**

However, we faced some financial hurdles this year. Notably, Oranga Tamariki reduced some of our services starting in January 2025, which included closing the Iosis Whānau Centre residential centre, parenting and men's development programmes and a community social worker position. These contract adjustments have subsequently lowered our revenue from government contracts in this financial year. We also experienced clawbacks on our Oranga Tamariki contract due to staff vacancies, further impacting contract revenue. On a positive note, rising interest rates have boosted our investment income. Overall, grants and donations remained relatively stable, with a bequest offsetting reductions in grants. We are pleased to report that total revenues for this financial year have increased compared to the previous year.

Payroll costs have decreased this year due to staff reductions at the Iosis Whānau Centre and unfilled positions. Despite this, payroll now accounts for approximately 77% of our total expenses, a larger proportion than in previous years. This increase is partly due to the adoption of pay equity scales for our social workers.

We have also focused on cost savings and efficiencies in our operating and administration areas. However, IT costs rose this year due to significant system changes, including moving to the cloud and updating software.

The 2024 financial results represent the consolidated accounts for the Iosis Limited and Iosis Properties Limited (the Group). Iosis Properties Limited was established to develop properties owned by Iosis Limited, with the aim of providing secure, high-quality social housing and community support for tenants.

In 2024, we recorded the sale of the investment property at Hutt Road, Manurewa, realising a profit of \$82,668. The construction of this property, a social housing complex with 21 two-bedroom apartments began in the 2022 financial year. Initially, the Group planned to retain the property for long-term rental income to support family social services in South Auckland.

During the 2022 financial year, economic shifts, particularly rising interest rates, raised concerns about the Group's debt servicing capabilities. The Group sold the Hutt Road property in November 2023, upon completion of construction. Iosis Properties Limited ceased operations in June 2024 and was subsequently closed and removed from the Company Register and Charities Services.

Other Comprehensive Revenue for the 2025 financial year, totalling \$851,700, reflects the increased valuation of land and buildings at Russell Road, Manurewa, in accordance with the Baptist Union Land and Buildings Revaluation Policy.

Overall, total Comprehensive Revenue & Expenses for the financial year ending June 2025 reached \$1,334,291, an increase compared to 2024. Our Statement of Financial Position remains robust, with substantial cash and term deposits and minimal current liabilities.

We extend our gratitude to our volunteer directors and the Baptist Churches of New Zealand for their ongoing assistance and support of Iosis.

We also thank our loyal supporters, including grant-funding organisations and individual donors. Their support allows us to continue working with local families to effect positive change and address personal and parenting challenges.

Full financial reports, audited by BVO Audit, are available upon request.



Rochelle Dixon  
BCom CA  
**Finance Manager**

## STATEMENT OF COMPREHENSIVE REVENUE AND EXPENSES

FOR THE YEAR ENDED 30 JUNE 2025

	YE JUNE 2025 \$	YE JUNE 2024 \$
<b>Revenue</b>		
Donations, fundraising and grants	313,192	315,940
Fees, subscriptions and other revenue from members	-	-
Revenue from providing goods or services	4,010,136	4,033,588
Interest, dividends and other investment revenue	136,457	95,123
Other revenue	11,293	6,270
<b>Total Revenue</b>	<b>4,471,078</b>	<b>4,450,921</b>
<b>Expenses</b>		
Expenses related to public fundraising	11,170	3,428
Volunteer and employee related costs	3,066,558	3,180,768
Costs related to providing goods or services	823,414	921,904
Grants and donations made	2,504	3,704
Other expenses	84,841	66,638
<b>Total Expenses</b>	<b>3,988,487</b>	<b>4,176,442</b>
<b>Operating Surplus for the year</b>	<b>482,591</b>	<b>274,479</b>
<b>Profit on Sale of Investment Property</b>		
Sale Proceeds of Investment Property Sold	-	11,688,789
Cost of Sale of Investment Property Sold	-	(11,606,121)
<b>Total Profit on Sale of Investment Property</b>	<b>-</b>	<b>82,668</b>
<b>Other Comprehensive Revenue</b>		
Other Comprehensive Revenue	851,700	-
<b>Total Other Comprehensive Revenue &amp; Expenses</b>	<b>851,700</b>	<b>-</b>
<b>Total Comprehensive Revenue &amp; Expenses</b>	<b>1,334,291</b>	<b>357,147</b>

## STATEMENT OF FINANCIAL POSITION

AS AT 30 JUNE 2025

	ACTUAL 30 JUNE 2025 \$	ACTUAL 30 JUNE 2024 \$
<b>ASSETS</b>		
<b>Current Assets</b>		
Bank accounts and cash	2,348,038	1,805,556
Debtors and prepayments	77,014	244,013
Inventory	-	-
Other current assets	1,653,487	1,563,320
<b>Total Current Assets</b>	<b>4,078,539</b>	<b>3,612,889</b>
<b>Non-Current Assets</b>		
Property, plant and equipment	3,834,867	3,047,897
Investments	-	-
Other non-current assets	-	-
<b>Total Non-Current Assets</b>	<b>3,834,867</b>	<b>3,047,897</b>
<b>TOTAL ASSETS</b>	<b>7,913,406</b>	<b>6,660,786</b>
<b>LIABILITIES</b>		
<b>Current Liabilities</b>		
Bank overdraft	-	-
Creditors and accrued expenses	232,469	184,926
Employee costs payable	346,093	402,975
Unused donations and grants with conditions	86,985	130,656
Other current liabilities	8,927	17,585
<b>Total Current Liabilities</b>	<b>674,474</b>	<b>736,142</b>
<b>Non-Current Liabilities</b>		
Other non-current liabilities	13,652	33,655
<b>Total Non-Current liabilities</b>	<b>13,652</b>	<b>33,655</b>
<b>Total Liabilities</b>	<b>688,126</b>	<b>769,797</b>
<b>Total Assets less Total Liabilities (Net Assets)</b>	<b>7,225,280</b>	<b>5,890,989</b>
<b>Accumulated Funds</b>		
Capital contributed by owners or members	913,959	913,959
Accumulated surpluses or (deficits)	2,401,108	1,918,517
Reserves	3,910,213	3,058,513
<b>Total Accumulated Funds</b>	<b>7,225,280</b>	<b>5,890,989</b>

# Nga mihi nui, you are **changing lives**

On behalf of all those we support, our heartfelt gratitude to our generous supporters, funders and donors. Knowing that you stand beside us strengthens and inspires our mahi as we guide whānau towards safer, happier, better lives.

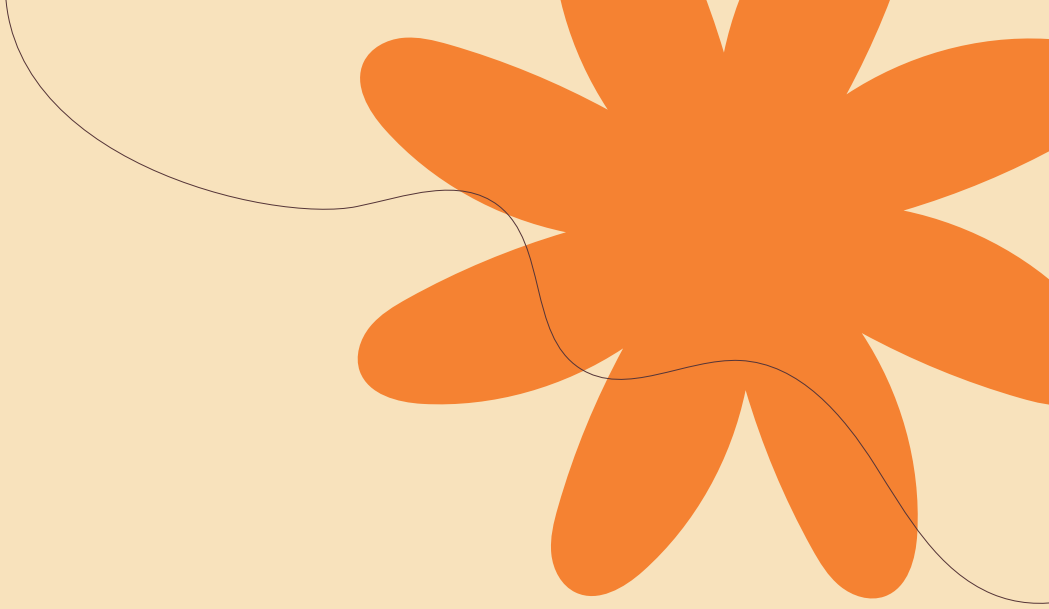
## July 2024 to June 2025 grants, bequests and major donations

Baptist Children's Trust  
Wilberforce Foundation  
Auckland Airport Community Trust  
Frimley Foundation  
Trillian Trust

Family Works Northern  
The Estate of Barbara Edwards  
Belmont Baptist  
Keith Godfrey Charity Trust No 2  
Northcote Baptist Op Shop







**“Ehara taku toa i te toa takitahi, he toa takitini.”**  
My strength is not as an individual, but as a collective.

## **Our contact details**

### **Physical address**

112C Russell Road, Manurewa, Auckland 2102

### **Postal address**

PO Box 98840, Manukau City, Auckland 2241

**Email** [enquiries@iosis.org.nz](mailto:enquiries@iosis.org.nz)

**Phone** (09) 269 0050

**Website** [www.iosis.org.nz](http://www.iosis.org.nz)



**Ko te whakawhiti o te  
oranga whānau mo te pai**